

# MO INFO

NEWSLETTER OF THE MISSOURI LIBRARY ASSOCIATION

January 2015

Volume 46, Number 1

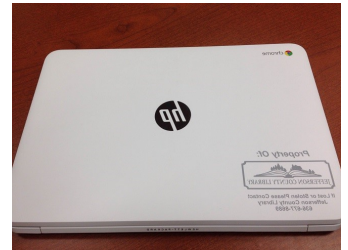
## A Statement from MLA President Christina Prucha



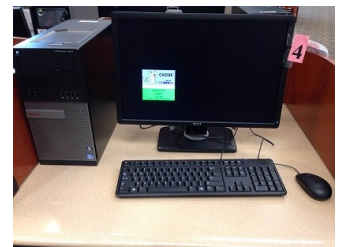
Happy New Year, MLA!

It's a brand new year and yes, it's time to make your resolutions. Why not decide to get more involved in MLA this year? MLA is full of opportunities. Check out and join one of the many [Community of Interest groups](#) hosted by MLA. You'll meet people and take part in discussions that are relevant to your interests. There are many COIs to choose from and each offers an array of networking and professional development possibilities. For example, Tech Services is the COI to beat at the MLA Conference when it comes to inviting others to join their group or maybe you want to consider following MLA's Public Library's Community of Interest Facebook page (<https://www.facebook.com/groups/195206140584065/>). The ways to become involved are as varied and interesting as each one of us.

MLA Committees are also looking for help. If you are an academic librarian or a librarian from a small community, the Legislative Committee needs your help. The subcommittees from Media and Publications are always looking for people from all over the state who can help MLA reach our membership through our online publication, MO INFO, Facebook, Twitter, our newly redesigned website <http://molib.org>, and other marketing ventures. If you are in the Kansas City area, consider contacting Dan Brower ([dbrower620@gmail.com](mailto:dbrower620@gmail.com)), our fearless 2015 Conference Coordinator, about conference committee work. The possibilities are bound only by your imagination and interests.



Most importantly, plan on being in Jefferson City on February 10, 2015 for Library Advocacy Day. As I write this in December 2014, the governor has released funding that has aided the smallest of our libraries but he did not address REAL funding. The November 2014 election gave the legislature the right to override the governor's withhold of these funds but as of this early date, no action has yet been taken. In light of the governor's withhold and the previous year's issues with the Secretary of State, consider attending Library Advocacy Day and becoming more involved with advocating for libraries. Library Advocacy Day is our chance to address our needs at the desks of our law makers. It is our one day to engage them *en masse* in a highly visible manner.



For those who have never attended, the cost is reasonable and the day is simple. The cost is \$25 for institutional members and \$35 for non-instructional members. First, call and make appointments to visit with your state [senators](#) and [representatives](#) between 1 and 5 pm on February 10, 2015. On February 10, arrive in Jefferson City at 9:30 for registration. From 10-11:30, you'll be welcomed, hear from State Librarian Barbara Reading, and you'll be briefed on the issues to take to your legislators. We will conclude the day with visits to our representatives and senators. At the time I write this, no evening reception is planned. Taking our uniform message to our legislators cannot be understated and seeing us out in numbers bolsters what they hear from us in their offices. Please participate in Library Advocacy Day (LAD). Our voices, raised in unison, are strong.

For more details on LAD, visit <http://molib.org> and click on Library Advocacy Day in the drop down menu. And as a nod to former MLA President Carol Smith, who always actively demonstrates the following words, I close my letter to you as she always did with the hope that I may always live up the words as she still does.

Yours in Service,  
Christina Prucha  
2015 MLA President

## MLA Membership Votes to Change Nominations and Elections Process in Bylaws

Results are in from the November survey that included proposed changes to Article V in the [Handbook](#), which outlines the nominations and elections process. From the 133 ballots, we received 122 responses on the three proposals.

Nominations & Elections (5.1): Yes – 89.5% (119); No – 0; No Response – 10.5% (14)

Nominations & Elections (5.2): Yes – 89.5% (119); No – 0; No Response – 10.5% (14)

Nominations & Elections (5.3): Yes – 85% (113); No – 6 (4.5%); No Response – 10.5% (14)

The changes in general will allow more flexibility for candidates and the membership during the election process.

Thank you everyone for voting and helping us improve MLA!

Rebecca van Kniest  
Handbook and Bylaws Committee  
[rvankniest@fontbonne.edu](mailto:rvankniest@fontbonne.edu)



## MU Librarians Author Chapters in New Library Instruction Book

Shelly McDavid, a library information assistant at the Veterinary Medical Library, and [Rebecca Graves](#), the educational services librarian for the Health Sciences Library, co-authored two chapters, "Introduction to Learning Theory" and "Introduction to Instructional Techniques," which appear in *Curriculum-Based Library Instruction: From cultivating faculty relationships to assessment* (Medical Library Association Book Series), 2014. The book has just been released and was co-edited by Amy Blevins, a graduate of the MU School of Information Science and Learning Technologies.

Jeannette E. Pierce  
Associate Director for Research & Information Services  
MU Libraries  
[piercejea@missouri.edu](mailto:piercejea@missouri.edu)

## Jennifer Peters of Rockhurst University a 2015 ALA Emerging Leader

Jennifer Peters, Content Management and Discovery Services Librarian at Rockhurst University, has been selected as a 2015 American Library Association Emerging Leader. Her participation in the program will be sponsored by the Missouri Library Association. The MLA sponsors one Emerging Leader each year by reimbursing costs associated with attending the ALA Midwinter and ALA Annual Conference.

To learn more about the ALA Emerging Leader program, visit <http://www.ala.org/educationcareers/leadership/emergingleaders>.

Diane Hunter  
Awards Committee Chair  
[hunterdi@umkc.edu](mailto:hunterdi@umkc.edu)

## The Knee Bone's Connected to the ..... Toxicology Resources from the National Library of Medicine You Just Might Need!

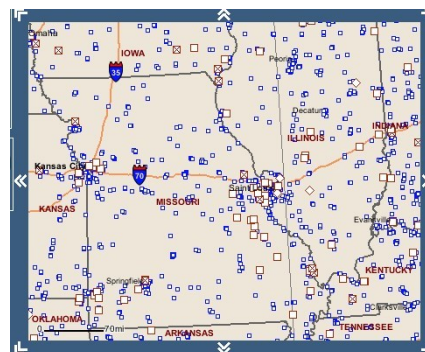
Have you ever had a patron inquire about environmental resources, what may be toxic in our geographic environment or even a home environment? Or what about lead in the soil? Or which careers may have hazardous exposures? These are just a few of the questions you may receive since our lives are filled with chemical exposures. How can you learn more? Well, the National Library of Medicine provides a host of free resources for just these purposes, through its Environmental Health and Toxicology Portal (<http://sis.nlm.nih.gov/enviro.html>) Take a look at just a few of the resources mentioned here.

**LactMed:** <http://lactmed.nlm.nih.gov>

A database of more than 900 drugs and other chemicals to which breastfeeding mothers may be exposed. For example, a young mother may wish to know if she can take aspirin while breastfeeding. By simply doing a search on aspirin, she can find that it is "best avoided during breastfeeding."

**TOXMAP:** <http://toxmap.nlm.gov/toxmap>

A geographic Information System that uses maps of the United States to help users visually explore Toxic Release Inventory (TRI) on more than 650 toxic chemicals. Is your community noted on this map? Also available is the information on the Superfund program, part of a federal government effort to clean up land in the U.S. that has been contaminated by hazardous waste.



**Haz-Map:** <http://hazmap.nlm.nih.gov>

An occupational toxicology database that links job tasks to occupational diseases and their symptoms. Want to know more, for example, about risks to hairdressers or child care workers? More than you want to know!



**Household Products Database:** <http://householdproducts.nlm.nih.gov/>

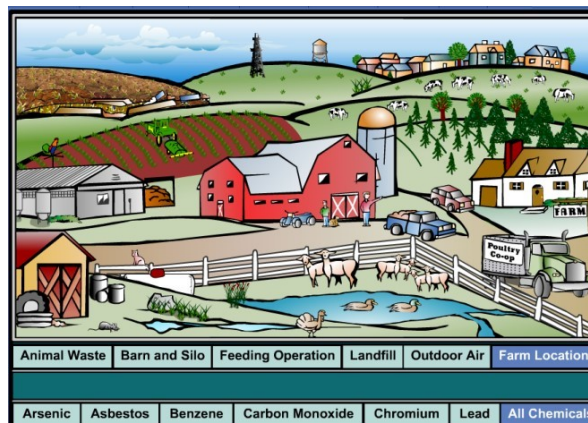
Human health effects information on more than 12,000 brand-name consumer products from landscape and yard to personal care to pesticides to pet care. Find the chemical make-up (maybe you have an allergy!), check for manufacturers, learn about first aid and how to dispose of the product safely. For a real challenge, find what ingredient is in acne scrub and toilet bowl cleaner!

**Tox Town:** <http://toxtown.nlm.nih.gov>

An interactive guide to commonly-encountered toxic substances and environmental health risks. Tox Town is highly interactive, with graphics, animation, and sound to add interest to learning about connections between chemicals, the environment, and the public's health. For example, in the Farm location, click on the cat and hear the cat meow. Then explore information on pets. Recommended for high school and college students, educators, and the concerned public.

**Wireless Information System for Emergency Responders (WISER®):** <http://wiserm.nlm.nih.gov>

Provides a wide range of information on hazardous substances, including substance identification support, physical characteristics, human health information, and containment and suppression advice. How about recommending this to the emergency responders in your city? It's easily downloadable to a mobile device.



*(Continued on page 4)*

## The Knee Bone's Connected to the ..... Toxicology Resources from the National Library of Medicine You Just Might Need!

*(Continued from page 3)*

**Disaster Information Management Research Center (DIMRC):** <http://disaster.nlm.nih.gov/>

Health information resources and informatics research related to disasters of natural, accidental, or deliberate design. Learn what you should have on hand in your home for emergency preparedness.

And if this isn't enough, try this for lots more databases!

**Enviro-Health Links:** <http://sis.nlm.nih.gov/enviro.html>

The screenshot shows the website [sis.nlm.nih.gov/enviro.html](http://sis.nlm.nih.gov/enviro.html). The page features a navigation menu with options like 'Find Information About...', 'Search TOXNET® Databases', and 'Enviro-Health Links'. A central banner reads 'Your Health and the Environment'. On the right, there is a search box for TOXNET and a section titled 'Search all TOXNET Databases'. Below the banner, there are sections for 'For Information About...' with links to 'Environmental Health Student Portal', 'Haz-Map', and 'Household Products Database'. A 'Reference Tools & Additional Resources' box highlights a search bar and an 'A to Z Index of Resources' grid. The footer contains copyright information and a last updated date of 13 December 2012.

[sis.nlm.nih.gov/enviro.html](http://sis.nlm.nih.gov/enviro.html)

Barb Jones  
National Network/Libraries of Medicine  
MidContinental Region –Missouri Coordinator  
[jonesbarb@health.missouri.edu](mailto:jonesbarb@health.missouri.edu)

## **Libraries Receive Grant from Jefferson Memorial Community Foundation for Collaborative 3-4-67 Health Education Initiative in 2015**

The Jefferson County Library, Crystal City, DeSoto and Festus Public Libraries, and the Jefferson County Health Department will share a \$100,000 grant from the Jefferson Memorial Community Foundation to collaborate on the 3-4-67 Health Education Initiative during 2015.

The grant was awarded to the Jefferson County Library Foundation, which will act as the fiscal agent to administer the grant and distribute the money to the participating agencies.

The 3-4-67 Health Education Initiative seeks to raise awareness of the three high risk behaviors (poor nutrition, lack of exercise and tobacco use) that contribute to the four chronic diseases (heart disease/stroke, type 2 diabetes, cancer and respiratory disease) that are the cause of 67% of the deaths in Jefferson County.

The grant money will be used to increase access to health and wellness information and expand outreach locations for health and wellness activities for all ages at local public libraries throughout the County.

Programs and activities will begin in January and continue throughout the year. "Our goal is to help people discover how to make choices that decrease their risk of disease and the burdensome cost of medical care, improving their chances for healthier, happier and more active lives," said JCL director Pam Klipsch.

The Jefferson Memorial Community Foundation was established when the Jefferson Memorial Hospital in Festus was acquired last year by Mercy Hospitals.

Pam Klipsch  
Director, Jefferson County Library  
[pklipsch@jeffcolib.org](mailto:pklipsch@jeffcolib.org)

## **Update on Mold Recovery Effort at MU Libraries: Government Documents**

In the July 2014 issue of MO INFO, the article "MU Libraries Receive Funding from Andrew W. Mellon Foundation for Recovery of Materials Damaged by Mold" described a partnership whereby "Washington University in St. Louis (WUSTL) and Missouri State University (MSU) will provide access to replacement copies of federal government documents and inter-library loan access to Missouri state materials, respectively."

Over the last few months, WUSTL and MSU have been packing and shipping congressional documents to MU, and the transfer of legislative branch publications is nearly complete. As MU catalogers add documents to the permanent collection and empty boxes, floor space around the loading dock at MU's storage facility is freed to accept more pallets. Next on the plan is to make arrangements for the shipment of federal executive branch materials, expected to take place in early 2015.

Also as part of the arrangement, MSU has been working to completely catalog its collection of Missouri state government documents. With expanded visibility of these materials, researchers from around the state and beyond will be able to more easily locate physical copies and use inter-library loan services to get access. MU Libraries altered an earlier plan to discard its own Missouri state government materials after receiving advice from OCLC that the items were very rare.

All three libraries are members of the Federal Depository Library Program and share a commitment to providing the public with free access to government information. U.S. government documents lost in the MU Libraries mold disaster and replacements copies being provided by WUSTL and MSU are all property of the federal government.

Marie Concannon  
Government Documents Coordinator  
MU Libraries  
[ConcannonM@missouri.edu](mailto:ConcannonM@missouri.edu)

## News from the Reference Services Division of the Missouri State Library

### Staff Changes

D. Waheedah Bilal began as Reference Services' new director on May 16 after the retirement of Susan Morrisroe. Waheedah is a native Missourian born and raised in St. Louis and currently lives in Columbia. She holds an MLS from the University of Missouri-Columbia as well as a master's in history. Her background as a librarian has been in the academic environment; holding positions at Westminster College, the University of Illinois, Springfield, Purdue University, and Indiana University-Purdue University, Indianapolis.



### Missouri Libraries Historical Collection

The Missouri Libraries Historical Collection is a special collection with the objective of making historical materials relating to Missouri libraries and library development accessible on site at the Missouri State Library. This collection includes reports, monographs, periodicals, surveys, studies, and ephemera authored by the State Library, about the State Library, and about libraries in the state of Missouri.

There are currently 343 items and 114 titles in the collection with more to be added. Titles include "[Annual Report of the Missouri Library Commission](#)" (1907–1946), "[Improving Public Library Service in Missouri](#)" by the Missouri Library Association (1953), "[The Libraries of Missouri: A Survey of Facilities](#)" by E.L. Morgan and Melvin W. Sneed (1936), "[Early Library Development in Missouri, 1938–1943: An Outline of the Contributions Made by a Federal Agency to Public Library Service Consisting of a Collection of Reports, Pictures, Charts and My Recollections of More Than Forty Years Ago](#)" by Hazel C. Page (1981), "[Final Report from Missouri's Delegation to the White House Conference on Library and Information Services](#)" (1980), and much more. Researchers must come to the Reference Services Division to view the items as they are not available for circulation.

### Missouri State Government Publications in Internet Archive

The Reference Services Division is using Internet Archive to house its collection of digital Missouri state government publications as part of the [State Publications Access Program](#). The Missouri State Publications collection can be found at <https://archive.org/details/missouristatepublications>.

Over 4,000 Missouri state government publications from every executive department as well as all six statewide elected offices and the General Assembly have been placed in the collection. Many more publications will be added in the coming months. Individual titles in Internet Archive are indexed by Google, and there are multiple ways to view them – desktop viewer, PDF, EPUB, Kindle, Daisy, plain text, and DjVu.

The Reference Services Division also maintains a small collection of print state government publications. Questions about the program may be directed to Annie Moots, Government Documents Librarian, at [annie.moots@sos.mo.gov](mailto:annie.moots@sos.mo.gov).

Annie Moots  
Government Documents Librarian  
Missouri State Library  
[annie.moots@sos.mo.gov](mailto:annie.moots@sos.mo.gov)

## Amigos Updates

### "Using CONTENTdm: An Amigos Online Conference," set for February 12

Plan now to attend "Using CONTENTdm: An Amigos Online Conference" that will focus on how libraries are using CONTENTdm. Shane Huddleston, CONTENTdm Product Manager for OCLC, is our keynote speaker. He promises an update on the software, details on the upcoming release, and a review of the roadmap. For more information about this online conference, free to Amigos Members, contact Christine Peterson, [peterson@amigos.org](mailto:peterson@amigos.org) or 800-843-8482, ext. 2891.

*(Continued on page 7)*

## Amigos Updates

*(Continued from page 6)*

### January Know & Go Updates

Our popular *Know & Go* educational series, one of many no-charge benefits available to Amigos members, will begin the new year with these informative sessions. [Editor's note: Some of these sessions are no longer available, but still listed here as a matter of record.]

#### [Know & Go: IFTTT: Making Social Media Work for You](#)

January 5

1:30 p.m. – 2:30 p.m. CST

#### [Know & Go: Creating Low-Tech Everyday Makerspaces on a Limited Budget](#)

January 12

1:30 p.m. – 2:30 p.m. CST

#### [Know & Go: Integrated Pest Management](#)

January 26

1:30 p.m. – 2:30 p.m. CST

### Upcoming training classes from Amigos

#### [Core Reference Skills](#)

January 6, January 8

10:30 a.m. – 12:30 p.m. CST

#### [Preservation of Audiovisual Materials](#)

January 6, January 8

1:30 p.m. – 3:30 p.m. CST

#### [Doing Digital Preservation: Small Steps to Ensuring Access](#)

January 13-14

10:30 a.m. – 12:30 p.m. CST

Classes meet online. Visit the [Amigos Continuing Education Training Schedule](#) for a complete list of scheduled training.

### Ask Amigos helps library with newspaper preservation question

*Ask Amigos* - the Librarian's Reference Desk, our free service to Amigos members that provides information, referral, and resources delivered by phone and e-mail, recently received this question:

We are currently using deacidification spray on our newspaper clippings and then encapsulating them. Is this the best way to preserve newspapers?

Carmen Cowick, Collections Care Specialist for Amigos, sent this informative response:

“Using a deacidification spray on newspapers will neutralize harmful acids while providing a lasting protective buffer against future acid problems. After the newspaper is deacidified, it can be encapsulated in a polyester film. This will provide support for a fragile item and permit safer handling. It is preferable to avoid encapsulating newspapers which have not been deacidified. The steps you are currently taking with your collection's newspapers are in line with preservation best practices and should be continued.”

Larry Godwin  
Communications Specialist  
Amigos Library Services  
[godwin@amigos.org](mailto:godwin@amigos.org)

## Springfield-Greene County Library Updates



Author/illustrator Jan Brett demonstrated her illustration style for about 800 children and adults Dec. 5 at the Library Center.

drawing. As she demonstrated her illustration style to create her Snowshoe bunny character, children followed along with paper and golf pencils the library staff distributed before her 40-minute talk. Afterwards, Brett spent four hours in the auditorium happily signing copies of her newest book and her popular titles. By evening's end, door counters registered 1,446 people entering the building from 2-10 p.m., most of them to catch a glimpse of a beloved author and illustrator.

### Author, illustrator Jan Brett Delights 800 in Springfield

Best-selling children's author and illustrator Jan Brett gave Springfield fans a night to remember on Friday, Dec. 5, at the Library Center. Massachusetts-based Brett chose the library district as one of the stops on her 23-city tour. She was promoting her new book, "The Animals' Santa." While library staff sold her books in the concourse, hundreds of children, teens and adults filed in to hear her presentation. From a stage set up in the center of the library, Brett talked about her career and encouraged the children to follow their passion for



Brett then signed books for four hours.



The annual children's Holiday Store at the Library Center attracted hundreds of families. Stores there, at the Library Station and Brentwood Branch Library had more than \$10,000 in sales.

### Holiday Stores Let Children be the Shoppers

Continuing a library tradition, area children and Brentwood Branch Library on Saturday, Dec. 6 and at the Library Center Dec. 6 through Sunday, Dec. 14. The stores, set up retail-style in library meeting rooms, are supplied with low-cost gifts purchased through the Between Friends Gift Shops. The shops operate in several of the library branches. Children can shop for their families and friends, and snag gifts priced at 25 cents to \$6. Library volunteers and staff are available to help each child up to age 18 select items and stay within his or her budget, and help wrap and tag the gifts while adults wait outside. The Holiday Store broke a record with more than \$10,000 in sales, said gift shops manager Shelli Kaminski. Proceeds from the sale help support the library's Summer Reading Program.

### New Library Site Offers Practice Driving Tests

Teens preparing to drive, new residents and seniors needing renewal exams are among the many people who can turn to the library for practice tests. Through a partnership with Driving-Tests.org, patrons can study and take practice tests from real Missouri-specific DMV materials. The company offered the program free to the Library. Patrons can access the site at <http://sgcl.driving-tests.org/missouri>.

### Local History Staffer Achieves Certified Genealogist Level

Local History & Genealogy Department Associate Patti Hobbs has been approved as a certified genealogist. Hobbs is one of only 10 certified genealogists in Missouri. "This is something she has been working on for a while, and a great recognition for her and our Library," said department Manager Brian Grubbs.

Kathleen O'Dell  
Community Relations Director  
Springfield-Greene County Libraries  
[kathleen@thelibrary.org](mailto:kathleen@thelibrary.org)



Patti Hobbs, Local History & Genealogy Department associate, achieved status as a certified genealogist.



## Mid-America Library Alliance Updates

### All-Access Pass for Webcasts FREE to MO Public Libraries

The Mid-America Library Alliance (MALA) in partnership with the Missouri State Library (MOSL), a division of the Secretary of State, is sponsoring 100 All-Access Passes for Libraries to MALA's library of webcasts and Library Espresso Shot training tutorials. These will be available **FREE** to employees of **Missouri Public Libraries** from January 1, 2015 through July 31, 2015.

This series is unique as it focuses specifically on library staff, patrons and boards. All subject and topic areas are specific to education and development of skills and services that will impact daily library operation. Through the pass, access is also available to the new Library Espresso Shot Training Tutorials which are 3 to 10 minute tutorials on timely topics of interest to library staff.

The first priority for the 100 passes will be to small and rural public library directors and their staffs, those with library service populations 70,000 and under. Registrations will be approved by the Missouri State Library. The pass is for use by one staff member only. Passes may not be shared. To register, go to the [All-Access Pass for Libraries page](#). Contact Mary Puhr, MALA Professional Development Coordinator, by e-mail at [marypuhr@mid-americalibraryalliance.org](mailto:marypuhr@mid-americalibraryalliance.org) or 816-521-7257 with any questions.

### Reserve lynda.com Licenses through MALA

The Mid-America Library Alliance (MALA) has collaborated with lynda.com and is offering group rates on licenses. These year-long licenses roll out on March 1, 2015, and cost **just \$100 per license**. We are taking reservations now!

For library staff training, these single licenses allow each individual user unlimited access to all the lynda.com content (3,100+ courses!) and features from March 1, 2015, through the end of February 2016 **for only \$100 per license**.

Why reserve now? Because there are limited seats available! Why purchase through MALA? Because we can offer the benefits of bulk purchasing.

A single \$100 annual license purchased through MALA saves you nearly \$275 off of the direct purchase cost per license. For groups of 20 or more, we may be able to offer an even greater savings.

### What Is lynda.com?

Offering training your way and on your schedule, lynda.com is an award-winning provider of rich, relevant and educational materials with an ever-expanding library of thousands of rich online tutorials in a variety of topic areas.

lynda.com's all-star team of trainers and teachers provides comprehensive and unbiased movie-based training. lynda.com is ideal for finding both quick answers as well as undergoing entire training series. Videos for all skill levels are offered, and they can be viewed a few minutes at a time or longer. Those who finish a training series will receive a custom-made certificate of completion.

### How Can You Apply what You Learn?

- Improve your Project Management skills with courses approved by the Project Management Institute (PMI)
- Assist Patrons asking about Microsoft, Adobe and Apple/Mac applications
- Keep your IT Staff current on the latest products and versions
- Expand your Social Media presence effectively and Reach New Audiences
- Engage Youth and Teens with new skills in Video, Music, and Animation
- Energize your Displays with Photography and Design
- Leverage Mobile Apps to reach Patrons in new ways
- and much more, **all for just \$100 per license!**

### Trial Length Licenses Available Now!

Would you like to try out lynda.com before March 1? We have a few short-term licenses still available. For only \$45 each, enjoy unlimited access to lynda.com through February 28, 2015. Fall in love with it and then purchase an annual license!

*[\(Continued on page 10\)](#)*

## Mid-America Library Alliance Updates

[\(Continued from page 9\)](#)

### For MALA Members Only – and Membership Is Easy!

If your organization is already a member of MALA — you are eligible. You or your organization must be a MALA member to be able to purchase licenses at the group rate. If you are in the Get Connected Courier Delivery Service – you ARE a MALA member!

Otherwise, it is easy to become a MALA Educational Affiliate Member and take advantage of this great training opportunity. And MALA membership is affordable! We offer Educational Affiliate membership (only \$25 per year for an individual!) on our website at: <http://www.mid-americalibraryalliance.org/membership.html>

### For Your Board Members

Your board members are considered members of your organization, too. If you join MALA, so do they!

### How Can You Offer this to Your Patrons?

Your patrons can also become individual MALA Educational Affiliates! For just \$25 per individual, anyone (patrons, vendors, your friends and family members!) can join MALA and then be eligible to purchase the lynda.com licenses at the group rate.

### Make It Happen

To reserve your licenses and for more information, please contact Kirsten Myers, Special Projects Coordinator, by e-mail at [kirstenmyers@mid-americalibraryalliance.org](mailto:kirstenmyers@mid-americalibraryalliance.org) or by phone at (816) 521-7266 or toll-free 877-600-9699.

### New MALA Espresso Shots Tutorials Subscription

Are you looking for a quick tutorial on a specific topic? We have just what you need! A Mid-America Library Alliance (MALA) Library Espresso Shot Training subscription. MALA is offering a one year subscription of short 3-10 minute tutorials that cover library-related current topics in a shorter timeframe. You will also receive any new “espresso shot tutorials” we add during your subscription year.

Topics currently included in the subscription package are:

- Addressing Gender Identity and Expression in the Library
- Avoid Email Phishing Scams
- Designing a Library Employee Dress Code
- Introduction to New Adult Fiction
- Library Policies for Computer Use
- Understanding Personality Styles

Each registration entitles only the registrant to access the tutorial. Registrations may not be shared in any way.

Cost:

- MALA member: \$25.00
- Non-member: \$50.00

[Register now](#), or for more information, contact Kirsten Myers by email at [kirstenmyers@mid-americalibraryalliance.org](mailto:kirstenmyers@mid-americalibraryalliance.org) or by phone at 816-521-7266 or toll-free 877-600-9699.

### Newest Webcasts

[New Adult Fiction: An Evolution or Revolution](#), with Beth Atwater, Collection Development Librarian with Mid-Continent Public Library, and Susan Burton, Executive Director of the Mid-America Library Alliance. (Running time: 35:46)

New Adult fiction encompasses books that feature protagonists in the 18-25-year-old age range. This new genre is a result of the onslaught of published novels featuring characters in a post-adolescent but not quite adult phase of life, as well as the growing trend of young adult “crossovers,” or YA novels that also appeal to an adult audience. These novels aim to bring the emotionally-intense story lines and fast-paced plotting of young adult fiction to stories that focus on a new range of experiences in life beyond the teenage years.

MALA Certificate Program: Reader's Advisory elective - 1 hour credit

[\(Continued on page 11\)](#)

## Mid-America Library Alliance Updates

### Newest Webcasts

[\(Continued from page 10\)](#)

[The Impact of Personality Styles at Work](#), with Tiffany Hentschel, SPHR, Employee Relations Manager for Johnson County Government. (Running time: 43:22)

In this webcast, we will discuss several instruments that can help you determine your own personality style and some of your co-worker's styles, as well. Understanding how different personality styles interact can help you gain a deeper understanding of the differences each of us brings to the workplace. It can also help you appreciate the strengths that others contribute, which can sometimes be easy to overlook when we interact with someone whose style is so different from our own.

MALA Certificate Program: Supervisor or Library Paraprofessional elective - 1 hour credit

Webcast Cost:

MALA Member: \$20.00

Non-Member: \$40.00

### Save the Date – KLA-MLA Joint Conference

September 30 to October 2, 2015

Kansas City Convention Center

Kansas City, MO

If you know any potential vendor representatives, please forward their names and e-mail addresses to Susan Burton at the Mid-America Library Alliance, [susanburton@mid-americalibraryalliance.org](mailto:susanburton@mid-americalibraryalliance.org).

Kirsten Myers

Special Projects Coordinator and Courier Services

Mid-America Library Alliance

[kirstenmyers@mid-americalibraryalliance.org](mailto:kirstenmyers@mid-americalibraryalliance.org)

**Save the Date**

**KLA/MLA** LIBRARIES WITHOUT BORDERS

**2015 Joint Conference**  
**Kansas Library Association & Missouri Library Association**

September 30th — October 2nd 2015  
 Kansas City, MO | Kansas City Convention Center  
 Anticipated Attendance: 900 — 1,000  
 Contact: 2015KLAMLAcontacts@gmail.com

## Updates for Library and Information Science SISLT, Missouri's iSchool

### LISGSA Spring Conference Call for Proposals

3<sup>rd</sup> Annual LISGSA Conference

From Dewey to Digital: A Journey through Librarianship

April 11, 2015

Columbia, Mo.

Call for Proposals

Due Jan. 25, 2015

The Library and Information Science Graduate Student Association is now accepting proposals for the 3<sup>rd</sup> Annual Conference. We invite University of Missouri LIS students, faculty, staff and other library professionals to join us by submitting proposals for presentations. This year's theme is the history of librarianship, featuring keynote speaker, Dr. Christine Pawley. Below you will find a link to a brief form asking for proposal details. Please fill this out and submit it by Jan. 25, 2015, for review. The LISGSA board will return its decision by mid-February. [https://missouri.qualtrics.com/SE/?SID=SV\\_agY2n34y60Tur7D](https://missouri.qualtrics.com/SE/?SID=SV_agY2n34y60Tur7D)

If you have any questions about the conference or submitting a proposal, please contact LISGSA President Haley Anthes at [heaxw7@mail.missouri.edu](mailto:heaxw7@mail.missouri.edu)

See you at the conference!

LISGSA Officer's Board

[\(Continued on page 12\)](#)

## Updates for Library and Information Science SISLT, Missouri's iSchool

*(Continued from page 11)*

### Congratulations, SISLT's Denice Adkins newly elected ALISE Secretary/Treasurer

The ALISE Board of Directors is happy to extend its congratulations to the winners of the ALISE 2015 Election.

- Louise Spiteri, Dalhousie University, vice president/president-elect
- Leanne Bowler, University of Pittsburgh, director of special interest groups
- Denice Adkins, University of Missouri Library Association, secretary/treasurer

We look forward to seeing all of our members in January at the ALISE Annual Conference and Centennial Celebration in Chicago!

Conference details: <http://www.alise.org/alise-2015-conference>



Denice Adkins



### SISLT'S Heather Lee Moulaison, ACRL Member of the Week

Join us in congratulating Heather Lea Moulaison, ACRL member of the week for Dec. 1, 2014. Way to go!

Read Heather's interview in the ACRL Insider by clicking here: <http://www.acrl.ala.org/acrlinsider/archives/9525>

Andrea Smolanovich  
SISLT  
[smolanovicha@missouri.edu](mailto:smolanovicha@missouri.edu)

Heather Lee Moulaison

## Corrections

This issue of *MO Info* is a correction of the one first submitted on January 15 2015. The following corrections were made:

### January 20 2015

- Corrections were made to the "2015 MLA Executive Board" section of page 13— newly-elected Members-at-Large Chris Pryor and Katy Smith were added, Cindy Stewart-Grant's position was changed to Library Director of Tonganoxie Public Library in Kansas, Seth Hirschberger's title was changed from "Assistant Treasurer/Member-at-Large" to "Assistant Treasurer", and Gerald Brooks's position was changed from "Director, Marketing and Public Relations" to "Director, Community Relations and Programming"

Jennifer Parsons  
Chair, *MO Info* Subcommittee  
[parsons.jm@gmail.com](mailto:parsons.jm@gmail.com)



The Missouri Library Association, Columbia, MO, est. 1900, is the Missouri State Chapter of the American Library Association, Chicago, IL.

### MO INFO Submission Guidelines

**MO INFO** (ISSN 0884-2205) is published six times/year (January, March, May, July, September, and November).

The most recent issue as well as back issues of MO INFO can be viewed on the MLA membership webpage at <http://molib.org/about/mo-info-newsletter>.

MO INFO is produced by the Publications Committee. To facilitate the Committee's production process, please follow the submission suggestions below.

Article format:

- Microsoft Word document
- Include desired headline and your contact email and role in MLA
- Include digital photos (with captions) and graphics with your articles as desired

Article and Advertising Submission Deadline: 15th of the month preceding publication.

Article copy submitted by email to Jennifer Parsons at [parsons.jm@gmail.com](mailto:parsons.jm@gmail.com).

### 2015 MLA Executive Board

#### President (2015):

Christina Prucha  
Cataloguer Librarian/Archivist  
Logan University  
Chesterfield, MO 63017  
[christina.prucha@logan.edu](mailto:christina.prucha@logan.edu)

#### President-Elect (2015):

Sharla Lair  
Consortial Services and Training  
Coordinator  
MOBIUS  
Columbia, MO 65203  
[sharla@mobiusconsortium.org](mailto:sharla@mobiusconsortium.org)

#### Past-President (2014):

Gerald S. Brooks  
Director, Community Relations and  
Programming  
St. Louis Public Library  
St. Louis, MO 63103  
314-662-1950 (cell)  
[gbrooks@slpl.org](mailto:gbrooks@slpl.org)

#### ALA Councilor (2014-2016):

Regina Greer Cooper  
Executive Director  
Springfield-Greene County Library District  
Springfield, MO 65801  
417-883-5366  
[reginac@thelibrary.org](mailto:reginac@thelibrary.org)

#### Assistant Treasurer (2015)

Seth Herschberger  
Assistant Director  
Cass County Public Library  
Harrisonville, MO 64701  
816-380-4600  
[hershbergers@casscolibrary.org](mailto:hershbergers@casscolibrary.org)

#### Member-at-Large (2013-2015):

Jodie Borgerding  
Instruction and Liason Librarian  
Webster University  
Webster Groves, MO 63119  
314-246-7819  
[jborkerding80@webster.edu](mailto:jborkerding80@webster.edu)

#### Member-at-Large (2013-2015)

Cindy Stewart-Grant  
Library Director  
Tonganoxie Public Library  
Tonganoxie, KS 66086  
[director@tonganoxielibrary.org](mailto:director@tonganoxielibrary.org)

#### Member-at-Large (2014-2015):

Cynthia Dudenhoffer  
Director of Information Resources  
Central Methodist University  
Fayette, MO 65248  
660-248-6292  
[cmdudenh@centralmethodist.edu](mailto:cmdudenh@centralmethodist.edu)

#### Member-at-Large (2014-2016)

Eric Petersen  
Lead Librarian  
H&R Block Business & Career Center  
Kansas City Public Library  
Kansas City, MO 64105  
[ericpetersern@kclibrary.org](mailto:ericpetersern@kclibrary.org)

#### Member-at-Large (2014-2016)

Chris Pryor  
Reference Manager  
St. Louis County Library  
St. Louis, MO 63131  
[cnpryor@gmail.com](mailto:cnpryor@gmail.com)

#### Member-at-Large (2014-2016)

Katy Smith  
Reference Librarian/Associate Professor  
St. Louis Community College— Meramec  
St. Louis, MO 63122  
[kesmith@stlcc.edu](mailto:kesmith@stlcc.edu)

#### Management Firm— Ex-Officio

Tracy Byerly  
Chief Communications and Membership  
Development Officer  
AMIGOS  
Ballwin, MO 63021  
972-340-2893  
[byerly@amigos.org](mailto:byerly@amigos.org)