



Welcome & Introductions

- Name
- Library
- # of years as MLA member
- Current leadership role
- Last good book you read?

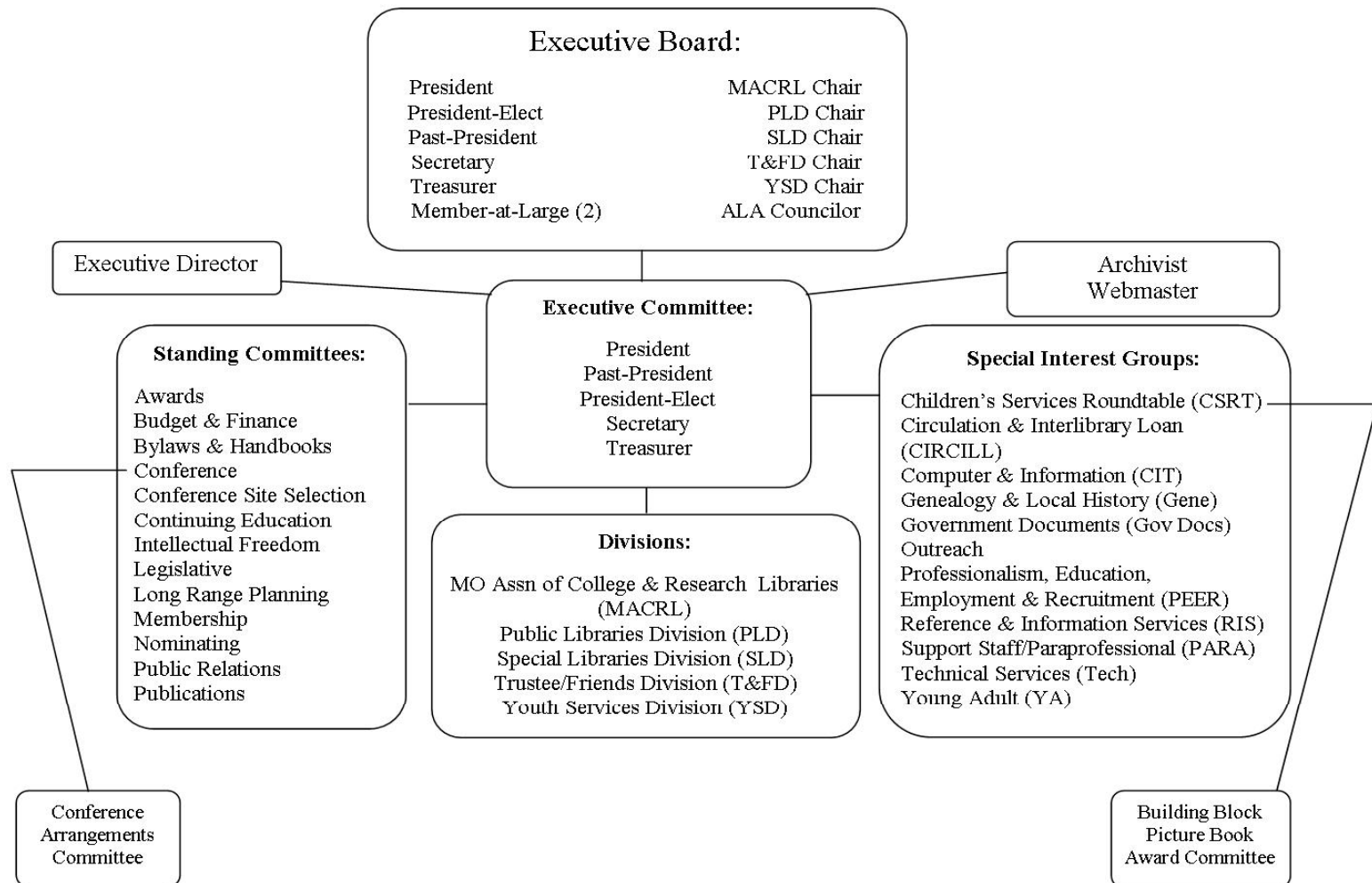


Missouri Library Association

- What are we? What do we do?
- Defined: MLA is a professional and educational organization that promotes library service, the profession of librarianship, and cooperation among all types of libraries and organizations concerned with library service in the State of Missouri.
- How are we structured?



MLA Organizational Chart



Missouri Library Association

- What exactly is a “Unit”?
 - Divisions
 - Committees (and Appointments)
 - SIGs (Special Interest Groups)



Missouri Library Association

- 5 Divisions representing members by library type, library user group, and library trustees and friends
 - MACRL
 - Public Library Division
 - Special Library Division
 - Trustees and Friends Division
 - Youth Services Division (new in 2008)
- Each has three elected officers (by division members) and one Executive Board vote per division



Missouri Library Association

Appointments and Committees are created as needed and serve the will of the Executive Board. All are appointed by the president under which they will serve.

- Archivist
- Webmaster
- Annual Conference Committee
 - Conference Coordinator(s)
 - Conference Arrangements Committee (selected by conference coordinator)
 - Site Selection Committee



Missouri Library Association

- Awards Committee
- Budget and Finance Committee
- Bylaws and Handbook Committee
- Continuing Education Committee
- Intellectual Freedom Committee
- Legislative Committee
- Long Range Planning Committee
- Membership Committee
- Nominating Committee
- Public Relations Committee
- Publications Committee



Missouri Library Association

SIGs, Special Interest Groups are the alphabet soup of MLA!

- Each have steering committees similar to that of the Divisions
- May be formed by members to pursue any activity that supports the purpose and/or goals of MLA
- Must be comprised of at least 15 members
- Must apply for recognition
- Chairs attend executive board meetings but do not have a vote



Missouri Library Association

Special Interest Groups:

- CSRT (Children's Services Round Table)
- CIT SIG (Computer & Information Technology)
- CIRCILL SIG (Circulation & Interlibrary Loan)
- Gene SIG (Genealogy & Local History)
- Government Documents SIG
- Outreach Services SIG
- PEER SIG (Professionalism, Education, Employment, and Recruitment)
- RISSIG (Reference and Information Services)
- Support Staff/Paraprofessional SIG
- Technical Services SIG
- YASIG (Young Adult Special Interest Group)



Missouri Library Association

- How does it all come together?

The Management Team:

- The Members of Executive Board (officers, elected officials & division chairs) and Executive Committee (officers)
- The Executive Director

With support from:

- SIG Steering Committees
- Board Committees
- Individual and Institutional Members
- Stakeholders



Missouri Library Association

Our Management Team Tools:

- Staff
- Bylaws
- Handbook (policies)
- Handbook (procedures)
- Institutional Memory (hardest to replace), Archives, MO Info, Business records

Other tools include:

- Orientation Manual
- 2009 Meeting Schedule
- Board report template
- Lists of all units and Board (don't forget past officers)



Missouri Library Association

Example questions of the Association:

1. Who signs contracts?

Answer: Board president

2. Who creates a new committee?

Answer: Executive Board

3. Who approves a new Association Division?

Answer: The Membership

4. Who reviews staff performance?

Answer: Executive Committee



Missouri Library Association

2009 Norms & Expectations

- Norms – things that we accept as standard and a must
 - Regular reporting by units
 - Unit representation at Board meetings
 - Unit goals established for 2009
 - Conference contributions
 - Member leadership
- Expectations – opportunities
 - Cooperation/collaboration amongst units
 - Unit specific member recruitment
 - Member communications (listservs, MO INFO, targeted correspondence)
 - Begin long range planning for future years



Missouri Library Association

Thank you for attending!
Please send feedback on
today:

Email: mlaprez09@gmail.com

Phone: 816-268-8072

